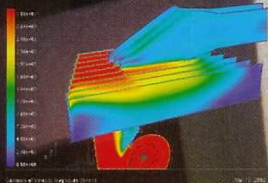
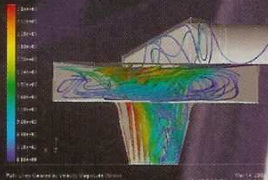
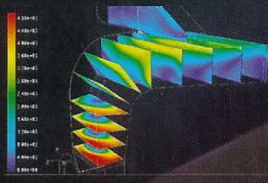


Power Through Technology and Craftsmanship

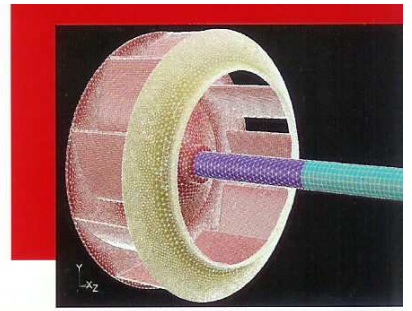


Industrial Air Moving Equipment for Over a Century

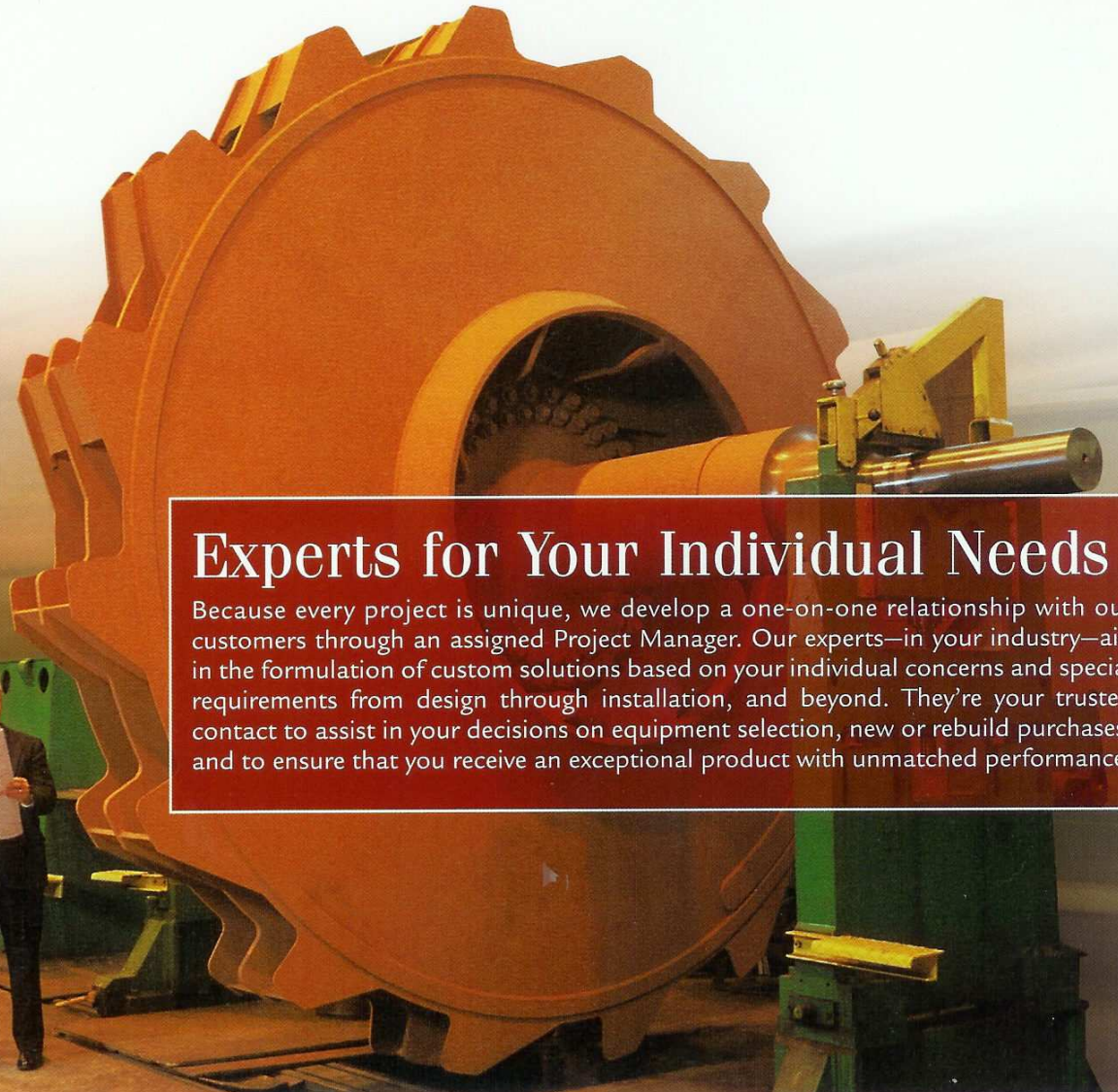


ROBINSON
INDUSTRIES, INC.





Establishing Industry STANDARDS



Experts for Your Individual Needs

Because every project is unique, we develop a one-on-one relationship with our customers through an assigned Project Manager. Our experts—in your industry—aid in the formulation of custom solutions based on your individual concerns and special requirements from design through installation, and beyond. They're your trusted contact to assist in your decisions on equipment selection, new or rebuild purchases, and to ensure that you receive an exceptional product with unmatched performance.



The Robinson Repair & Rebuild Program...An Exceptional Alternative

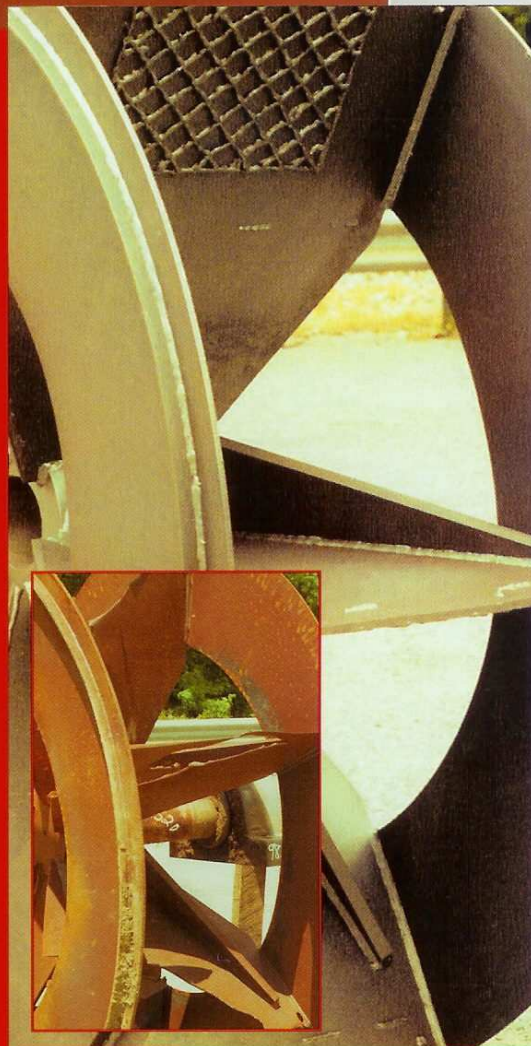
Robinson prides itself in offering an extensive repair and rebuild program that supplies a desirable alternative to the cost of purchasing new fans. Regardless of the original manufacturer, Robinson repairs or rebuilds *all* types, models and designs of air-moving equipment while exceeding other companies' services with our advanced capabilities. It is Robinson's ongoing dedication to industry that has made this program a top priority in the operation.

The after market department is an excellent example of the meticulous assessment and analysis Robinson Industries upholds for quality control. Not only does Robinson supply a newly repaired fan that reflects expert workmanship but we also apply the same superior quality and design improvements used in our new fans. Extra consideration for performance is determined as well, ensuring that every avenue has been explored for any possible design changes to existing installations or retrofitting a new design that may offer improved efficiencies and fan performance. In all cases involving equipment or design modifications, Robinson works within the parameters of your existing system to ensure that an improved, more durable air movement device emerges.

ROUND-THE-CLOCK, 24-HOUR HOTLINE

In addition to its first-class repair and rebuild service, Robinson Industries' wholly owned subsidiary, **Robinson Fans Service and Equipment Co. Inc.**, is an on-site service facility located in Trussville, Alabama. No matter what kind of air-moving equipment you operate, Robinson Fans Service and Equipment Co. can be your most important resource to keep it running at peak efficiency. Robinson Fans Service can complete most diagnostic and repair operations at your site...and in many cases, a turnkey repair job takes only a matter of days.

Industries Served: STEEL • CEMENT & LIME
ALUMINUM • AIR POLLUTION CONTROL APPLICATIONS
METALS MINING & PROCESSING • FERTILIZER
PETROCHEMICAL • PAPER • FOUNDRY • COAL
ETHANOL • UTILITIES/POWER GENERATION



AT ROBINSON, OUR AIR-MOVING EQUIPMENT IS BUILT TO ENDURE OUR OWN RIGOROUS STANDARDS, THE SAME STANDARDS THAT ARE KNOWN THROUGHOUT THE INDUSTRY AS UNSURPASSED. FEWER BREAKDOWNS AND LONGER FAN LIFE ARE REALIZED DUE TO THE UTILIZATION OF TECHNOLOGY, CRAFTSMANSHIP, AND OUR UNRELENTING DEDICATION TO PRODUCE AN EXCEPTIONAL PRODUCT.

FOR OVER A CENTURY OUR MISSION HAS BEEN FOCUSED —*engineering superior quality air-moving equipment*—
ROBINSON INDUSTRIES.

Call your local representative for more information, or visit our Web site:

WWW.ROBINSONFANS.COM

for detailed technical specifications and data.



ROBINSON

INDUSTRIES, INC.

A Strong Foundation Built from Industrial Needs...

Robinson began engineering industrial air-moving equipment when industry itself was unaware of its critical needs to dramatically increase safety. J.R. Robinson's mission to build products to address this need was originated in the late 1800s. The dangerous conditions in which his father, Samuel, worked in as an English coal miner spurred him to develop exhaust fans that increased shaft ventilation. His efforts drastically reduced the number of underground explosions in the 1890s, and became the foundation for Robinson Industries. For over a century, the company has followed J.R. Robinson's mission—engineering superior quality air-moving equipment for pollution control and process applications.

Setting Technology in Motion

Robinson's engineering expertise and superior quality is continually enhanced by technology. Today, our state-of-the-art manufacturing facilities empower us to design, analyze, build, and rebuild equipment for use in your particular environment—even under the most extreme conditions—to ensure the least amount of wear over time.

With our complex testing laboratories, the latest Computational Fluid Dynamics analytical software, and advanced diagnostic equipment, initial designs are thoroughly evaluated for performance, longevity, and energy efficiencies. Our highly trained and experienced engineering teams conduct numerous quality checks, including finite element stress analysis and resonant frequency testing. This, coupled with Robinson Industries meticulous compliance to crucial ISO 9001 requirements, maintains that the utmost superior product is produced. Continuous research and evaluation allows us to stay ahead of industry and its ever-changing needs and standards—and assures that you receive a far premium product now *and* down the road.

Servicing Your Needs—Location & Capacity

Robinson Industries has four locations in the United States and Global Representatives to provide an array of application and engineering support for various industries. Our facilities have state-of-the-art capabilities for the initial design, are staffed with experts in craftsmanship, and have incomparable manufacturing equipment.

Robinson employs its own AMCA Accredited research and development laboratory and testing facilities.

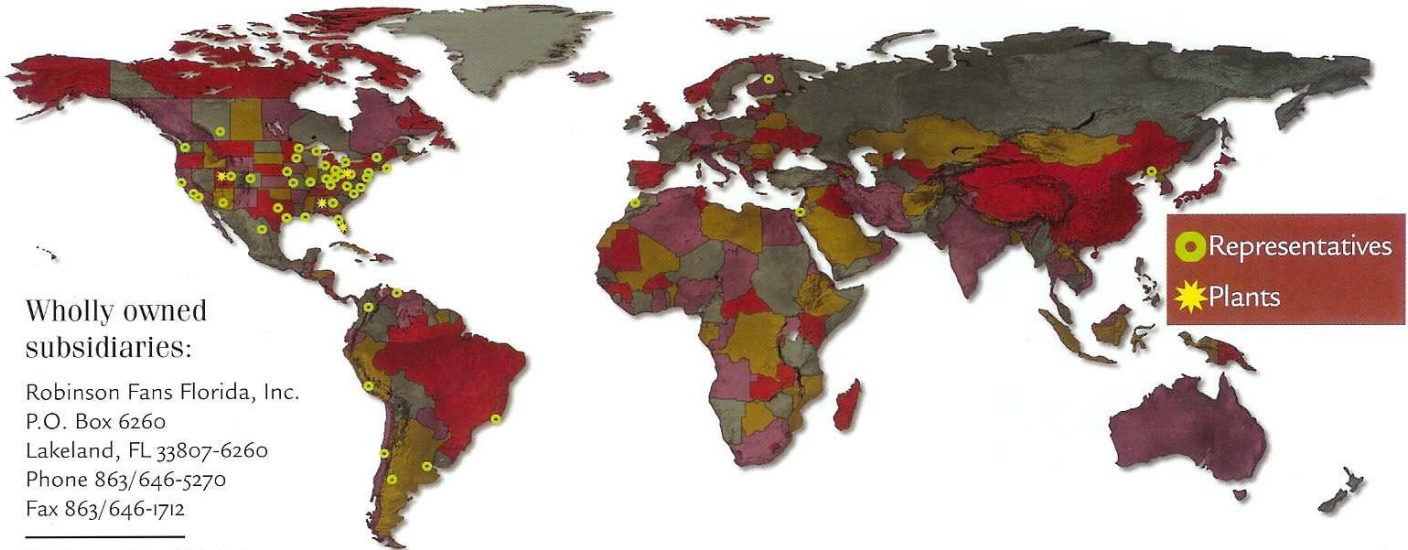
Our corporation supports AMCA with many of our employees participating in leadership roles. Surpassing our clients' expectations, Robinson Industries sets industry standards through the use of technology and craftsmanship.

Zelienople, PA—Our original site and Corporate Headquarters. Through the years this plant has grown many times to accommodate the increase in business and support the adoption of technological advances. This location houses our AMCA accredited laboratory, including mechanical run and performance testing facilities as well as our centralized engineering and design departments. Additionally, this facility is engaged in handling a large amount of repair and rebuilding work.

Because of the increase in our fan repair/rebuild program, Robinson has expanded our facilities to locations in **Lakeland, FL** and **Salt Lake City, UT**. Both of these facilities are also capable of manufacturing most new products as well as serving the after market niche.

The Lakeland, FL. plant boasts of having some of the largest equipment in the United States for two plane dynamic balancing. This equipment is also used for a variety of other rotating equipment up to 200" in diameter and 100,000 pounds in weight.

The Trussville, AL plant, another wholly owned subsidiary, Robinson Fans Service and Equipment is an on-site service facility specializing in keeping you running at utmost efficiency. Whatever air-moving equipment you operate, Robinson Fans Service and Equipment renders diagnostic and repair operations at your site, mostly in a matter of days so that your downtime is minimal.



Wholly owned subsidiaries:

Robinson Fans Florida, Inc.
P.O. Box 6260
Lakeland, FL 33807-6260
Phone 863/646-5270
Fax 863/646-1712

Robinson Fans West, Inc.
725 S. Gladiola Street
Salt Lake City, UT 84104-4437
Phone 801/972-3303
Fax 801/972-3445

Robinson Fans Service
and Equipment Co. Inc.
P.O. Box 707
Trussville, AL 35173-0707
Phone 205/655-8312
Fax 205/655-8327

*Our mission is to exceed our customers' expectations
for superior quality air-moving equipment and services.*

ROBINSON
INDUSTRIES, INC.

www.robinsonfans.com

Robinson Industries, Inc. • P.O. Box 100 • Zelienople, PA 16063-0100
Phone 724/452-6121 • Fax 724/452-0388

Represented by:

Apogee Engineering
Houston, TX
sales@apogee-engineering.com
(713) 627-9173